

INSTALLATION INSTRUCTIONS

Glove Box Kit

10015380

READ ALL INSTRUCTIONS BEFORE INSTALLING THIS KIT.



WARNING

Turn the key to the OFF position and remove it from the switch. Install wheel chocks in front and behind each wheel before installation procedure.

To prevent battery explosion that could result in severe personal injury or death, keep all smoking materials, open flames, or sparks away from the batteries.

Use insulated wrenches to decrease the risk of a dropped wrench from shorting out a battery, which could result in an explosion and severe personal injury or death.



When you service the vehicle, always wear eye protection. Be careful when working around batteries, or using solvents or compressed air.

TOOLS

- wheel chocks
- marker
- drill
- 6.35mm or 1/4" drill bit

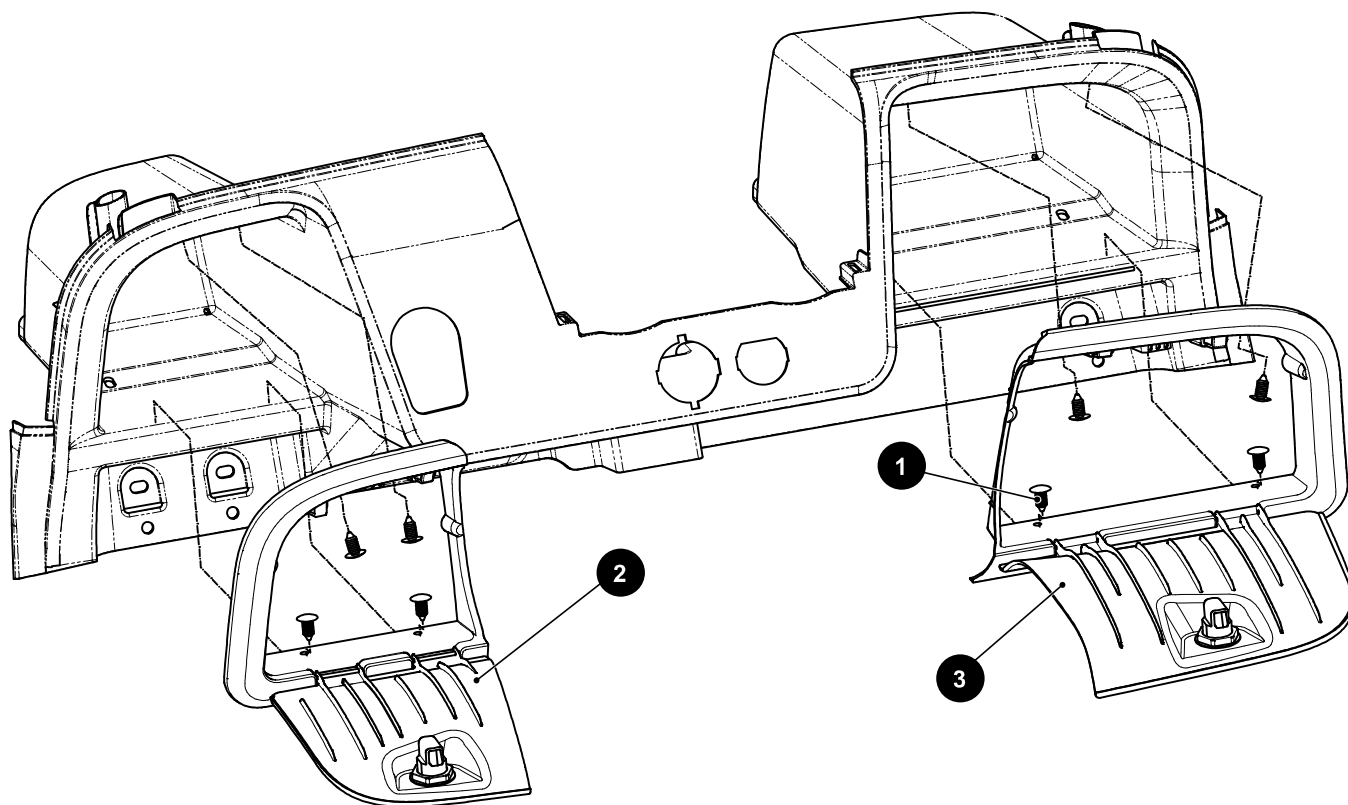
KIT CONTENTS

ITEM	QTY	PART NUMBER	DESCRIPTION
1	8	16816G2	ratchet rivet
2	1	10015262	glove box assembly, LH
3	1	10015264	glove box assembly, RH

VEHICLE PREPARATION

1. Compare the kit contents list to the parts packaged in the kit. Ensure all parts are included before beginning installation.
2. Park vehicle on a flat surface.
3. Turn the key to the OFF position and remove the key from the switch.
4. Chock wheels to keep vehicle from rolling.

A. Installation



1. Open glove box doors (2,3) and place into indicated locations.
2. Mark holes in glove box frames on the dash openings.
3. Drill 6.35mm (1/4") holes in the eight locations marked.
4. Secure glove box doors to dash with ratchet rivets (1).