

INSTALLATION INSTRUCTIONS

TXT/Express Top Kit

WARNING

Turn the key to the OFF position and remove it from the switch. Install wheel chocks in front and behind each wheel before installation procedure. Make sure parking brake is applied.

To prevent battery explosion that could result in severe personal injury or death, keep all smoking materials, open flames, or sparks away from the batteries. Use insulated wrenches to decrease the risk of a dropped wrench from shorting out a battery, which could result in an explosion and severe personal injury or death.



When you service the vehicle, always wear eye protection. Be careful when working around batteries, or using solvents or compressed air.

Do not tow vehicle backwards with canopy/extension installed.

NOTICE: This instruction contains installation procedures for multiple kits. Locate the instructions for your kit to proceed with installation.

- | | | | |
|-----------------------|----------|---------------------|----------|
| • TXT 2-Passenger Kit | 10015854 | • Top Extension Kit | 10029786 |
| • TXT 4-Passenger Kit | 10025867 | • Express S4 Kit | 10010036 |
| • Express S2 Kit | 10031581 | | |

VEHICLE PREPARATION

1. Compare the kit contents list to the parts packaged in the kit. Ensure all parts are included before beginning installation.
2. Park vehicle on a flat surface.
3. Turn the key to the OFF position and remove the key from the switch.
4. Chock wheels to keep vehicle from rolling.
5. Use a wrench with an insulated handle to disconnect the battery cables. Disconnect the negative (-) cable first, then disconnect the positive (+) cable.

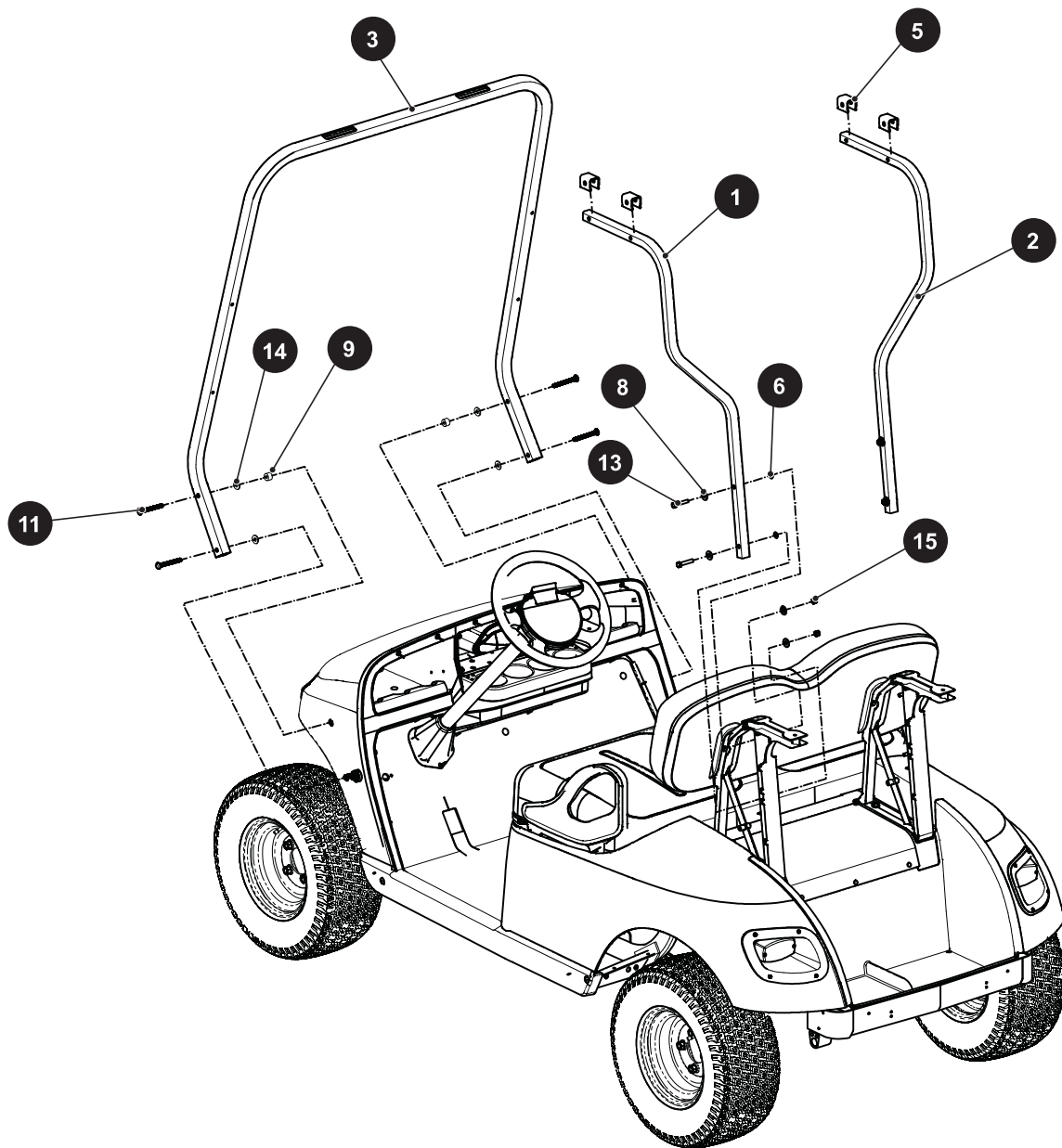
TOOLS

- | | | | |
|------------------|------------------|------------------------|----------------------------|
| • wheel chocks | • drill | • ratchet handle | • open end metric wrenches |
| • metric sockets | • 5/8" drill bit | • T30, T40 torx driver | |

KIT CONTENTS - 10015854 TXT 2-PASSENGER KIT

ITEM	QTY	PART NUMBER	DESCRIPTION
		10029771	strut kit (includes items 1 - 15)
1	1	10031754	rear strut, LH
2	1	10031755	rear strut, RH
3	1	10011021	front strut
4	4	645956	lock nut, M8X1.25
5	4	10025583	strut spacer
6	4	17255G1	Teflon washer
7	4	10033018	plastic screw, M6X2.14X20
8	8	01110G03	flat washer, 15.8X8.5X1.5
9	2	634807	spacer
10	4	10008552	torx bolt, M8-1.25X60
11	4	652311	torx bolt, black, 5/16-18
12	2	10033573	front canopy bracket assembly (includes items 12A - 12B)
12A	2	10009661	front canopy bracket
12B	2	10033567	EPDM tape
13	4	00685G7	Hex head bolt, 5/16-18
14	8	634808	flat washer, 5/16
15	4	11098G6	lock nut
16	1	10094160G0X	top

A. Strut Installation

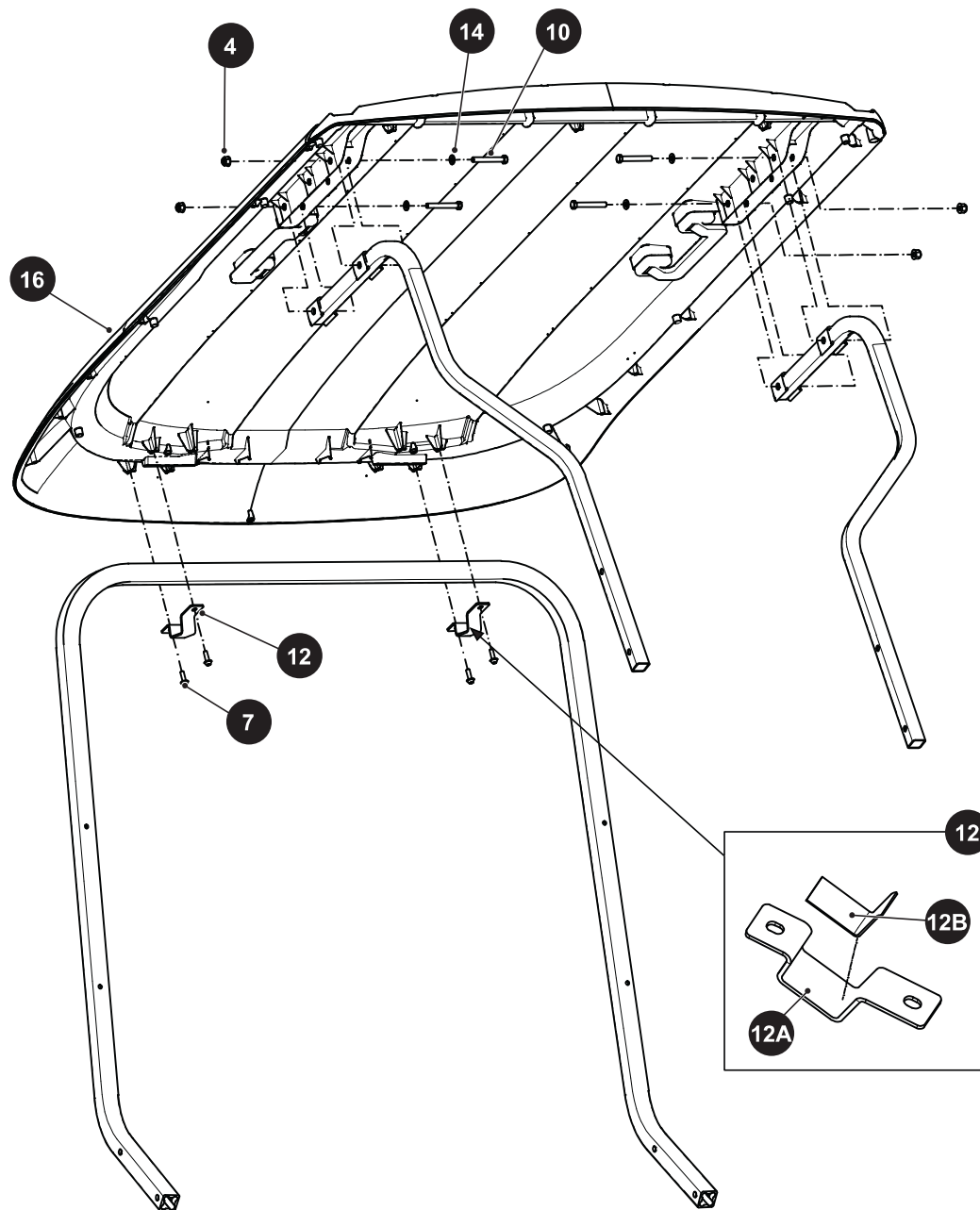


1. Mount front strut (3) to front of vehicle using four 5/16-18 torx bolts (11), four 5/16 washers (14) and two spacers (9).
2. Mount rear left and right struts (1, 2) to vehicle using four 5/16-18 hex head bolts (13), eight flat washers (8), four Teflon washers (6) and four lock nuts (15). See illustration for correct placement of hardware.
3. Tighten hardware to the torque value shown below.

Item	Torque Specification
torx bolt (11)	13 - 15 ft. lbs (18 - 20 Nm)
hex head bolt (13)	

4. Place two spacers (5) on the top of each rear strut.

B. Top Installation



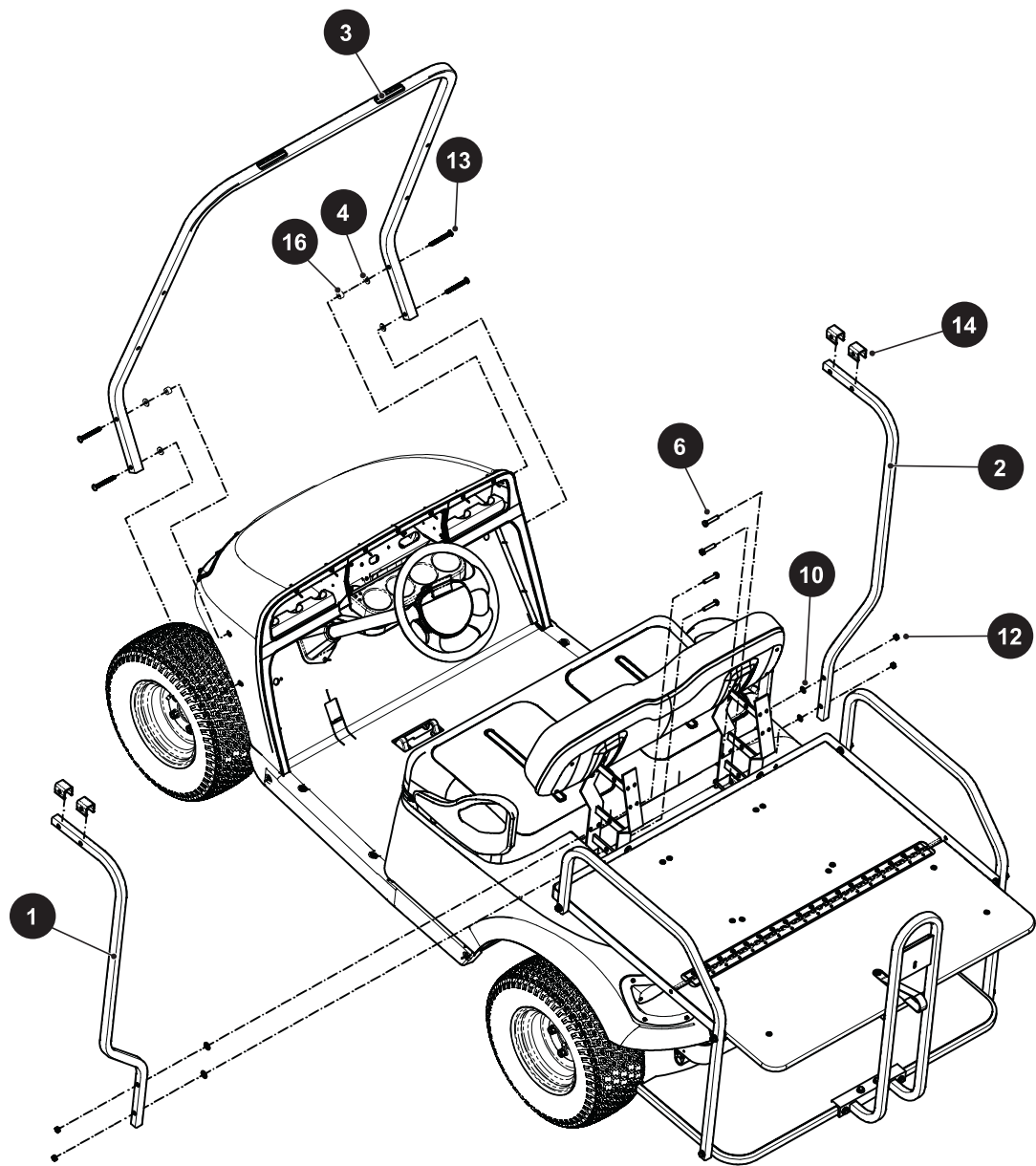
1. Align top (16) with mounting holes on front and rear struts.
2. Remove backing from tape (12B) and apply tape to the bottom and rear inside faces of front canopy bracket (12A).
3. Secure the front end of top to the front strut with the brackets (12) and four 20mm M6 screws (7) as shown.
4. Secure rear of top to rear struts using four 60mm M8 screws (10), four washers (14) and four lock nuts (4).
5. Tighten hardware to the torque value shown below.

Item	Torque Specification
screw (7)	1 - 2 ft. lbs (1.5 - 2.5 Nm)
screw (10)	5 - 7 ft. lbs (7 - 10 Nm)

KIT CONTENTS - 10025867 TXT 4-PASSENGER KIT

ITEM	QTY	PART NUMBER	DESCRIPTION
		10029831	strut kit (includes items 1-19)
1	1	10009031G01	rear strut, LH
2	1	10009031G02	rear strut, RH
3	1	10011021	front strut
4	8	634808	flat washer, 5/16
5	4	10008552	torx bolt, M8-1.25X60
6	4	10030811	bolt, 3/8-16X2
7	5	608747	flat washer, M6
8	5	10000646	rubber washer, M6
9	15	10033018	screw, M6X2.14X20
10	4	00771G5	nylon washer
11	2	10033573	front canopy bracket assembly (includes items 11A-11B)
11A	2	10009661	front canopy bracket
11B	2	10033567	EPDM tape
12	4	10031427	lock nut, 3/8-16
13	4	652311	torx screw, 5/16-18
14	4	10025583	rear spacer
15	8	645956	lock nut, M8X1.25
16	2	634807	spacer
17	1	10045541G01	extension bracket, LH
18	1	10045541G02	extension bracket, RH
19	1	10094160G0X	top
20	1	10094159G0X	top extension
21	2	10045772	extension support bracket
22	2	10016722	M8 - 1.25 X 25 torx bolt
23	2	10008553	M8 - 1.25 X 50 torx bolt

A. Strut Installation

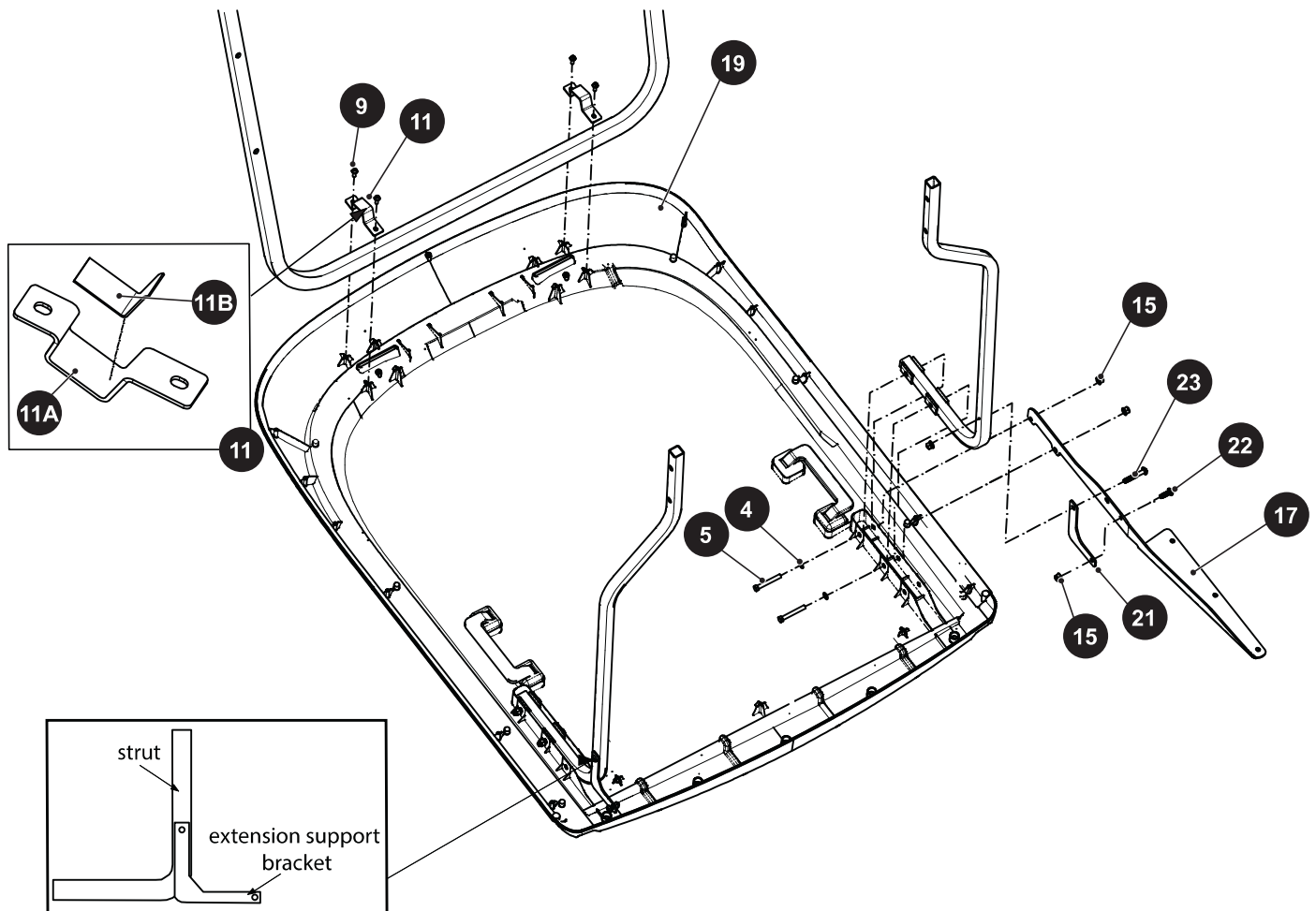


- 1. Mount front strut (3) to front of vehicle using four 5/16-18 torx screws (13), four 5/16 washers (4) and two spacers (16).
- 2. Mount rear left and right struts (1, 2) to vehicle using four 3/8-16 screws (6), four nylon washers (10) and four lock nuts (12). See illustration for correct placement of hardware.
- 3. Tighten hardware to the torque value shown below.

Item	Torque Specification
torx screw (13)	13 - 15 ft. lbs (18 - 20 Nm)
nut (12)	

- 4. Place two spacers (14) on the top of each rear strut.

B. Top Installation

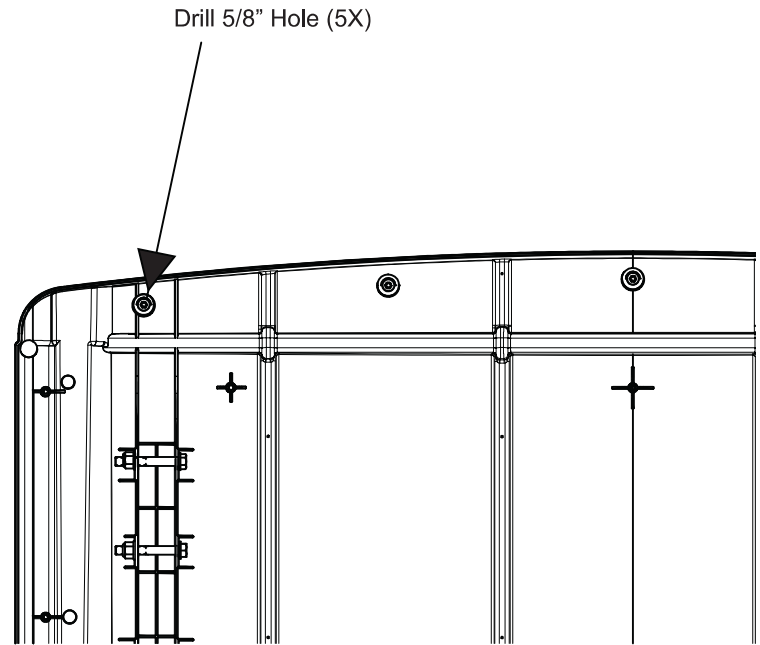


1. Align top (19) with mounting holes on front and rear struts. Rear struts will fit into pocket on underside of top.
2. Remove backing from tape (11B) and apply tape to the bottom and rear inside faces of front canopy bracket (11A).
3. Secure the front end of top to the front strut with the brackets (11) and four 20mm M6 screws (9) as shown.
4. Connect extension brackets (17, 18) to the rear struts (1, 2) and canopy (19) using four 60mm M8 bolts (5), four 5/16 washers (4) and four M8 lock nuts (15).
5. Attach canopy extension support brackets (21) to extension brackets (17, 18) and rear struts (1, 2) using one 50mm M8 torx bolt (23), one 25mm M8 torx bolt (22), and two M8 lock nuts (15) per side as shown.
6. Tighten the hardware to the torque values below..

Item	Torque Specification
screw (9)	1 - 2 ft. lbs (1.5 - 2.5 Nm)
lock nut (15)	5 - 7 ft. lbs (7 - 10 Nm)

C. Top Preparation

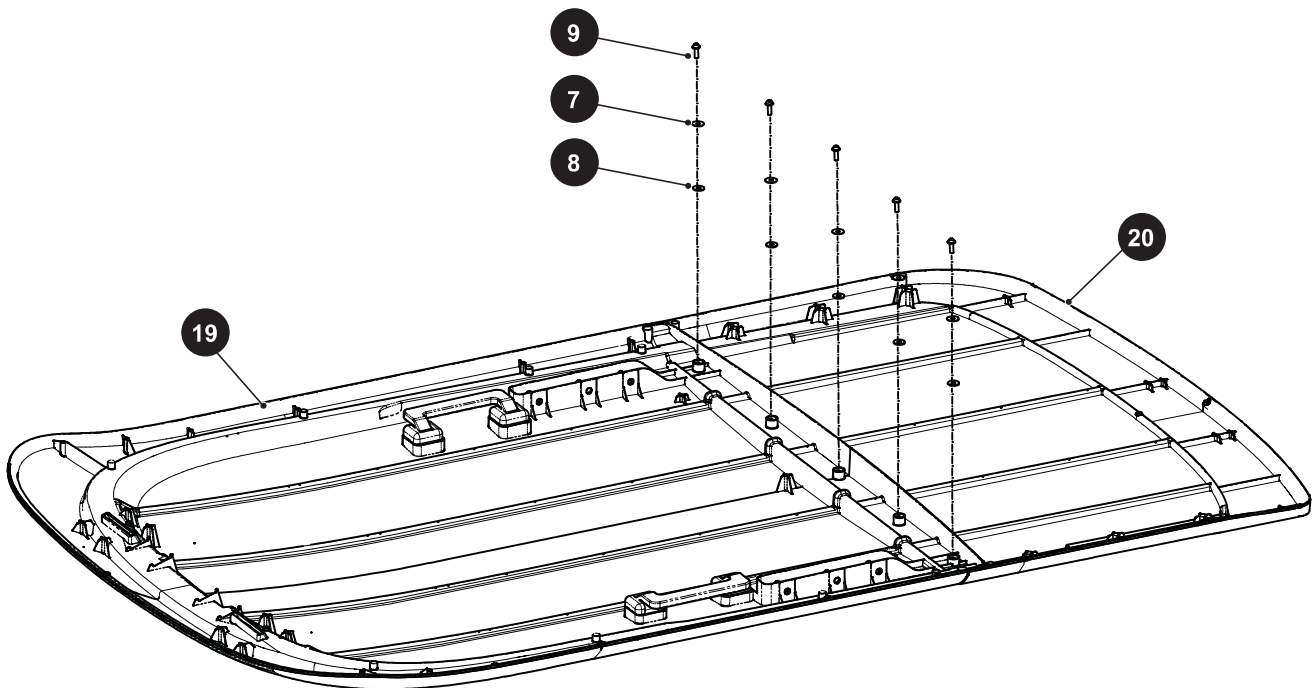
1. Locate the five mounting bosses under the rear edge of the top.
2. Using a 5/8" bit, drill holes through the center of each mounting boss.



NOTICE: Install all hardware finger-tight and final torque hardware once completely assembled.

To prevent buckling of extension, torque screws (9) from the center moving out toward to the edge.

3. Place front edge of top extension (20) over rear edge of top (19), aligning mounting bosses with drilled holes. Secure with five 20mm M6 screws (9), five M6 flat washers (7) and five M6 rubber washers (8).



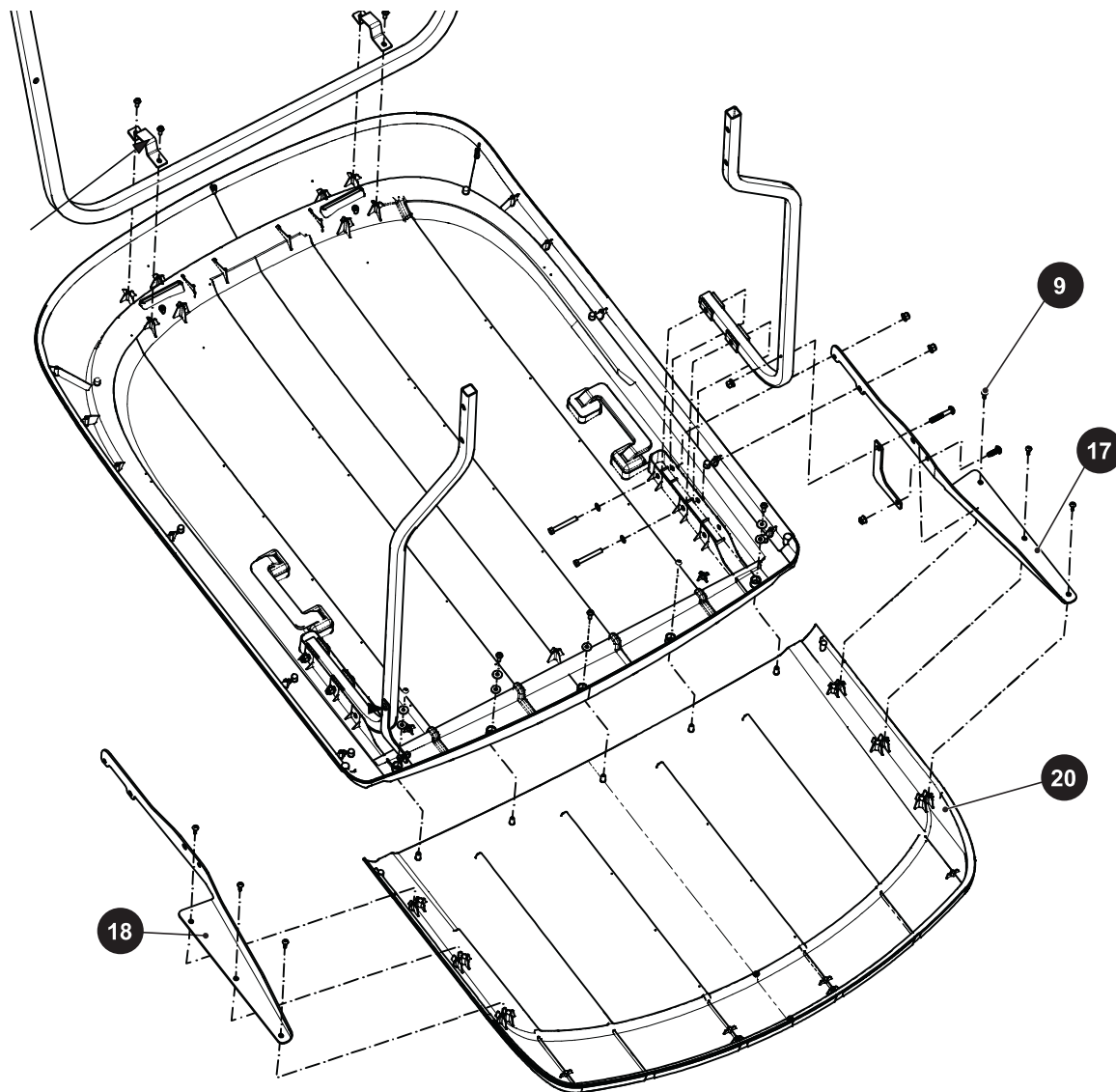
4. Tighten screws to the torque value shown below:

Item	Torque Specification
screw (9)	2 - 3 ft. lbs (3 - 5 Nm)

D. Top Extension Assembly

1. Connect extension brackets (17, 18) to sides of top extension (20) using six 20mm M6 screws (9) as shown.
2. Tighten hardware to the torque value shown below.

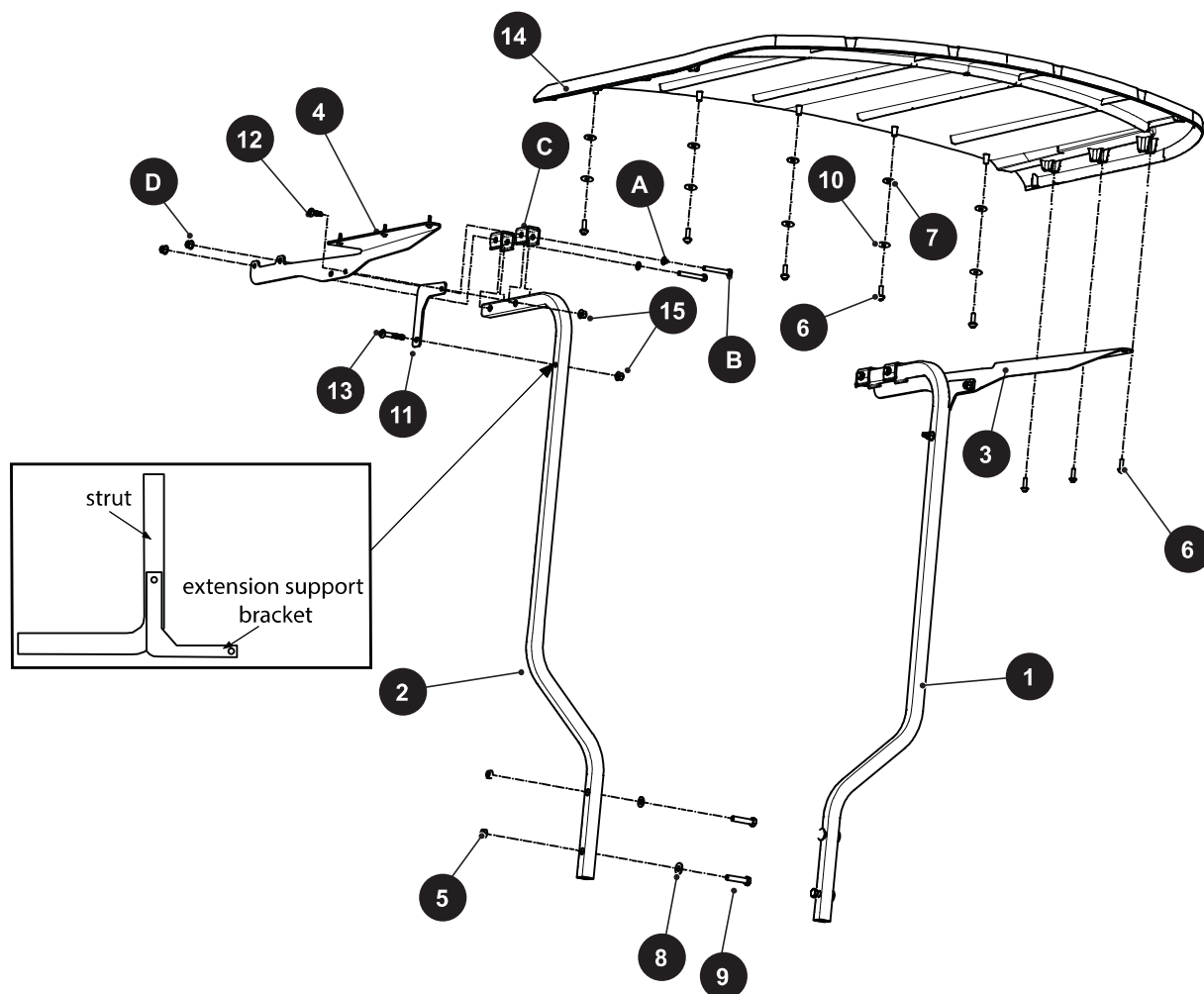
Item	Torque Specification
screw (9)	2 - 3 ft. lbs (3 - 5 Nm)



KIT CONTENTS - 10029786 TXT TOP EXTENSION KIT

ITEM	QTY	PART NUMBER	DESCRIPTION
		10029789	strut kit (includes items 1 - 11)
1	1	10009031G01	rear strut, LH
2	1	10009031G02	rear strut, RH
3	1	10045541G01	extension bracket, LH
4	1	10045541G02	extension bracket, RH
5	4	10031427	lock nut, 3/8-16
6	11	10033018	plastite screw, M6X2.14X20
7	5	10000646	rubber washer
8	4	00771G5	nylon washer
9	4	10030811	bolt, 3/8-16X2
10	5	608747	flat washer, M6X1.5
11	2	10045772	extension support bracket
12	2	10016722	M8 - 1.25 X 25 torx bolt
13	2	10008553	M8 - 1.25 X 50 torx bolt
14	1	100941590X	canopy extension
15	4	645956	lock nut, hex flange, M8X1.25
A	4	616671	flat washer, 15.8X8.5X1.5
B	4	10008552	bolt, M8-1.25X60
C	4	10025583	strut spacer
D	8	645956	lock nut, hex flange, M8X1.25

A. Top Extension Installation



NOTICE: Hardware (A, B, C, D) is reused from 10015854 TXT 2-Passenger Canopy Top Kit.

Leave all hardware loose until the canopy extension is completely installed.

Refer to 10025867 step C for top preparation procedure.

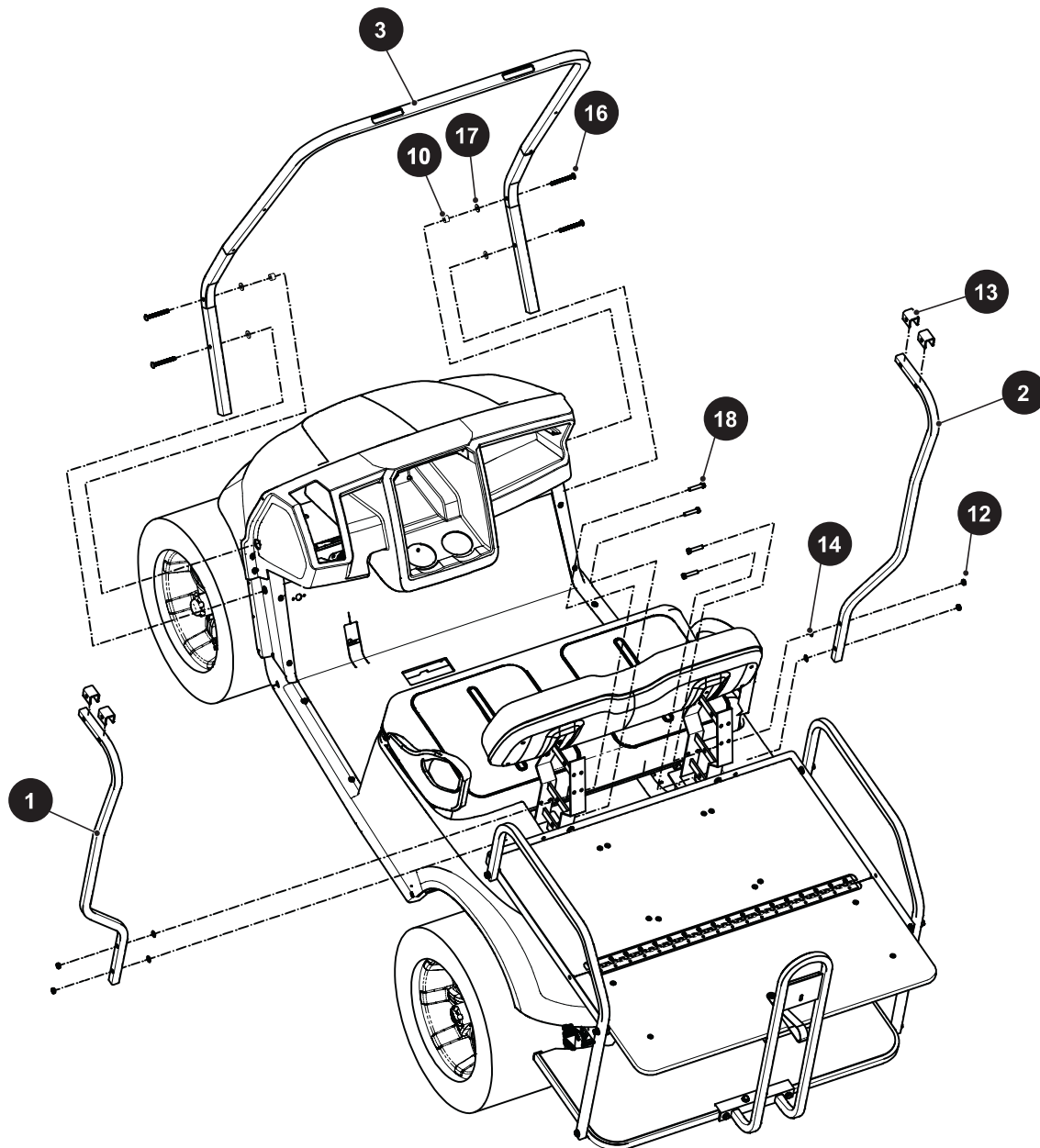
1. Making sure the rear of the canopy top is propped adequately, remove the existing rear struts (retain top hardware) and secure the bottom of the new rear struts (1,2) using four 3/8-16 bolts (9), four nylon washers (8) and four lock nuts (5).
2. Place two spacers (C) on the top of each rear strut. Tops of the rear struts will fit into pockets on underside of canopy.
3. Mount left and right canopy extension brackets (3, 4) to struts (1, 2) using existing top hardware.
4. Install canopy extension support brackets (12) using one 50mm M8 torx bolt (13), one 25mm M8 torx bolt (12), and two M8 lock nuts (15) per side as shown.
5. Mount top extension(14) to rear of existing top using five rubber washers (7), 5 flat washers (10), and five M6 screws..
6. Mount top extension (14) to canopy extension brackets (3, 4) using six M6 screws (6)
7. Tight all hardware to the torque values below.

Item	Torque Specification
screw (6)	1 - 2 ft. lbs (1.5 - 2.5 Nm)
locknut (5, 15)	13 - 15 ft. lbs (17 - 20 Nm)
locknut (D)	5 - 7 ft. lbs (7 - 10 Nm)

KIT CONTENTS - 10010036 EXPRESS 4-PASSENGER KIT

ITEM	QTY	PART NUMBER	DESCRIPTION
		10029738	strut kit (includes items 1 - 19)
1	1	10009108G01	rear strut, steel, LH
2	1	10009108G02	rear strut, steel, RH
3	1	10011022	front strut
4	2	10033573	canopy bracket assembly (includes items 4A-4B)
4A	2	10009661	front canopy bracket
4B	2	10033567	EPDM tape
5	1	10045541G01	extension bracket, LH
6	1	10045541G02	extension bracket, RH
7	4	10008552	torx bolt, M8-1.25X60
8	15	10033018	screw, M6
9	5	10000646	rubber washer, M6
10	2	634807	spacer
11	8	645956	hex flange lock nut, M8
12	4	10031427	lock nut, 3/8-16
13	4	10025583	rear strut spacer
14	4	00771G5	nylon washer
15	5	608747	flat washer, M6
16	4	652311	torx head bolt, 5/16-18 x 3
17	8	634808	flat washer, 5/16
18	4	10030811	hex head cap screw, 3/8-16
19	1	10094160GXX	top
20	1	10094159GXX	top extension
21	2	10045772	extension support bracket
22	2	10016722	M8 - 1.25 X 25 torx bolt
23	2	10008553	M8 - 1.25 X 50 torx bolt

A. Strut Installation

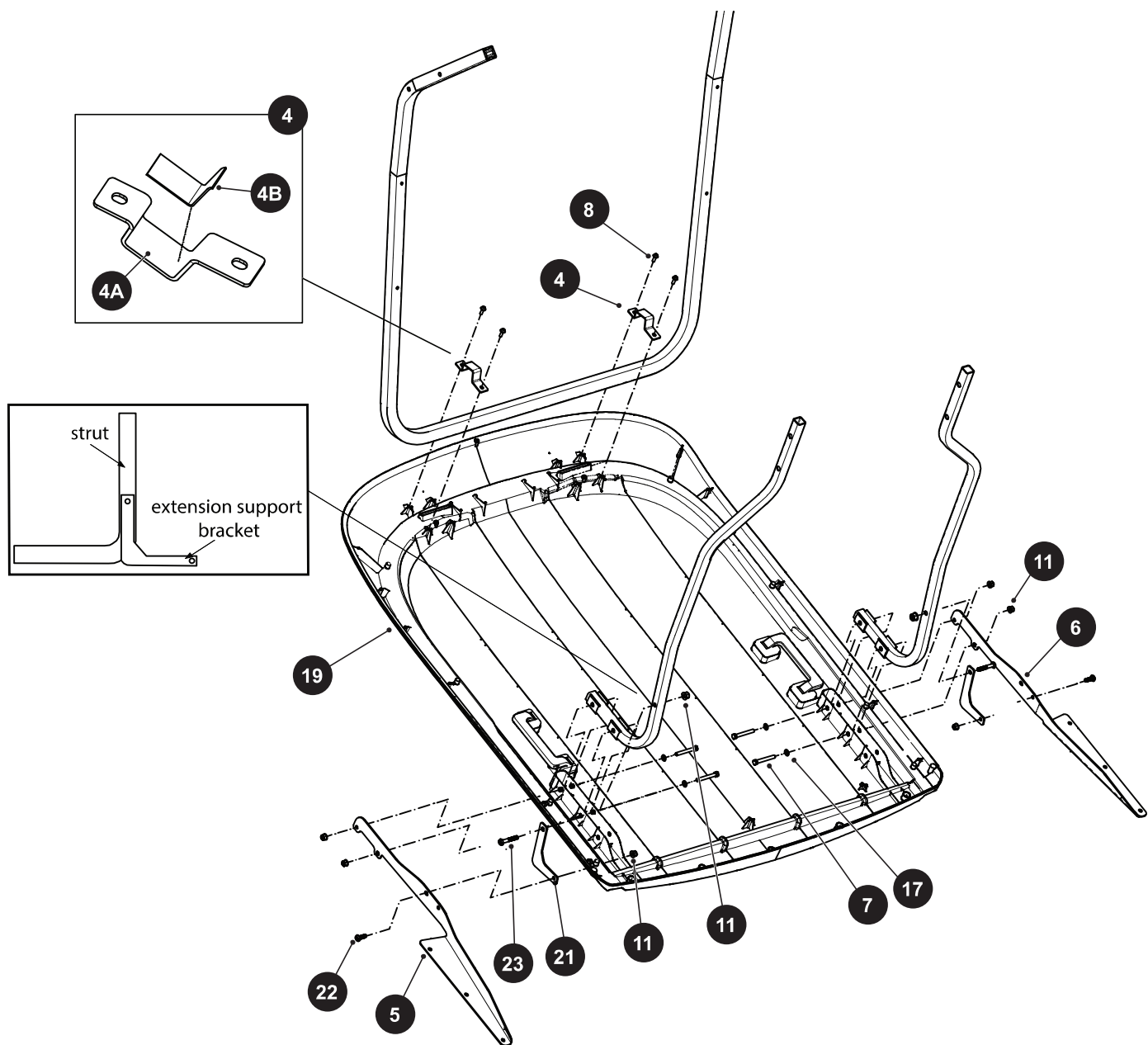


1. Mount front strut (3) to front of vehicle using four 5/16-18X3 torx bolts (16), four 5/16 washers (17) and two spacers (one per side) (10) as shown.
2. Mount rear left and right struts (1, 2) to vehicle using four 3/8-16 hex cap screws (18), four nylon washers (14) and four lock nuts (12) as shown.
3. Tighten hardware to the torque value shown below.

Item	Torque Specification
torx bolt (16)	13 - 15 ft. lbs (18 - 20 Nm)
hex cap screw (18)	

4. Place strut spacers (13) onto rear struts where shown in detail.

B. Top Installation

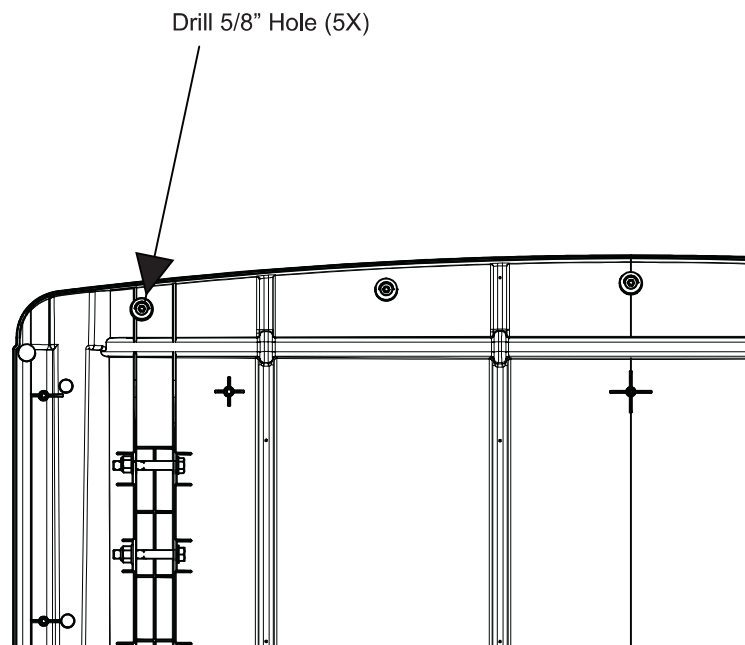


1. Align top (19) with mounting holes on front and rear struts. Rear struts will fit into pocket on underside of top.
2. Remove backing from tape (4B) and apply tape to the bottom and rear inside faces of front canopy bracket (4A).
3. Secure the front end of top to the front strut with the brackets (4) and four 20mm M6 screws (8) as shown.
4. Connect extension brackets (5, 6) to the rear struts (1, 2) and canopy (19) using four 60mm M8 bolts (7), four 5/16 washers (17) and four M8 lock nuts (11).
5. Attach canopy extension support brackets (21) to extension brackets (5, 6) and rear struts (1, 2) using one 50mm M8 torx bolt (23), one 25mm M8 torx bolt (22), and two M8 lock nuts (11) per side as shown.
6. Tighten the hardware to the torque values below.

Item	Torque Specification
screw (9)	1 - 2 ft. lbs (1.5 - 2.5 Nm)
lock nut (15)	5 - 7 ft. lbs (7 - 10 Nm)

C. Top Preparation

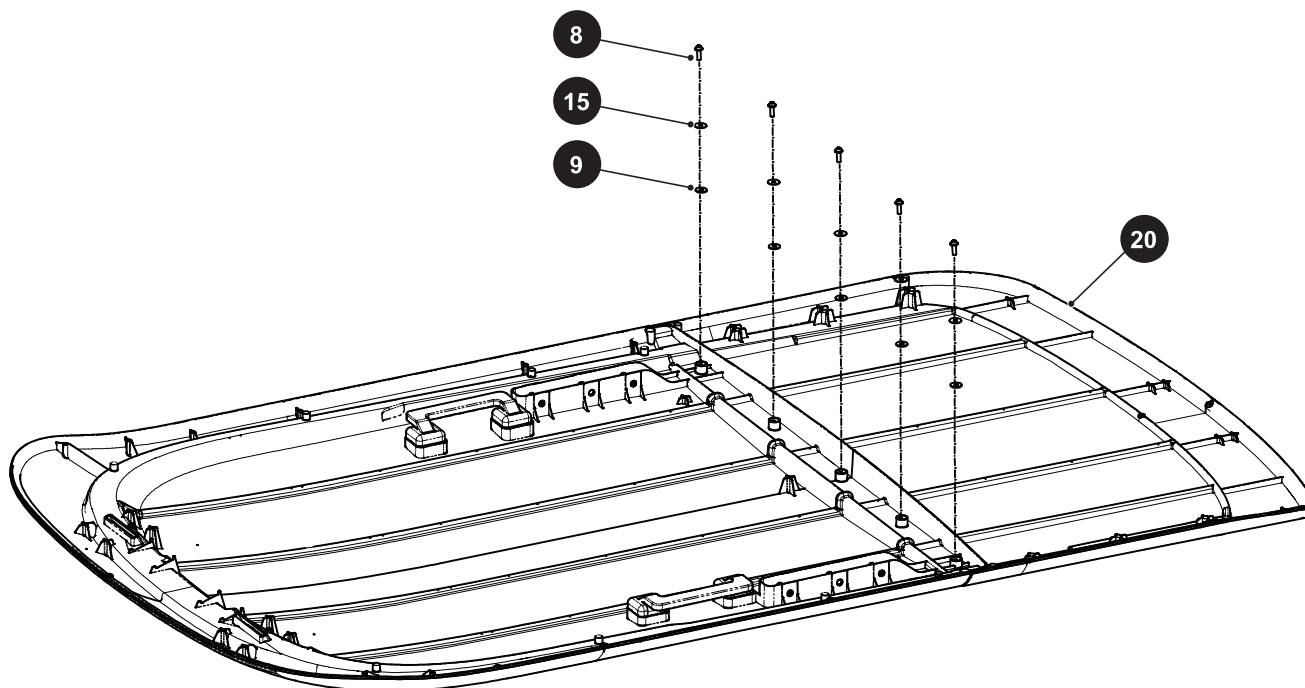
1. Locate the five mounting bosses under the rear edge of the top.
2. Using a 5/8" bit, drill holes through the center of each mounting boss.



NOTICE: Install all hardware finger-tight and final torque hardware once completely assembled.

To prevent buckling of extension, torque screws (9) from the center moving out to the edge.

3. Place front edge of top extension (20) over rear edge of top, aligning mounting bosses with drilled holes. Secure with five 20mm M6 screws (8), five flat washers (15) and five rubber washers (9).



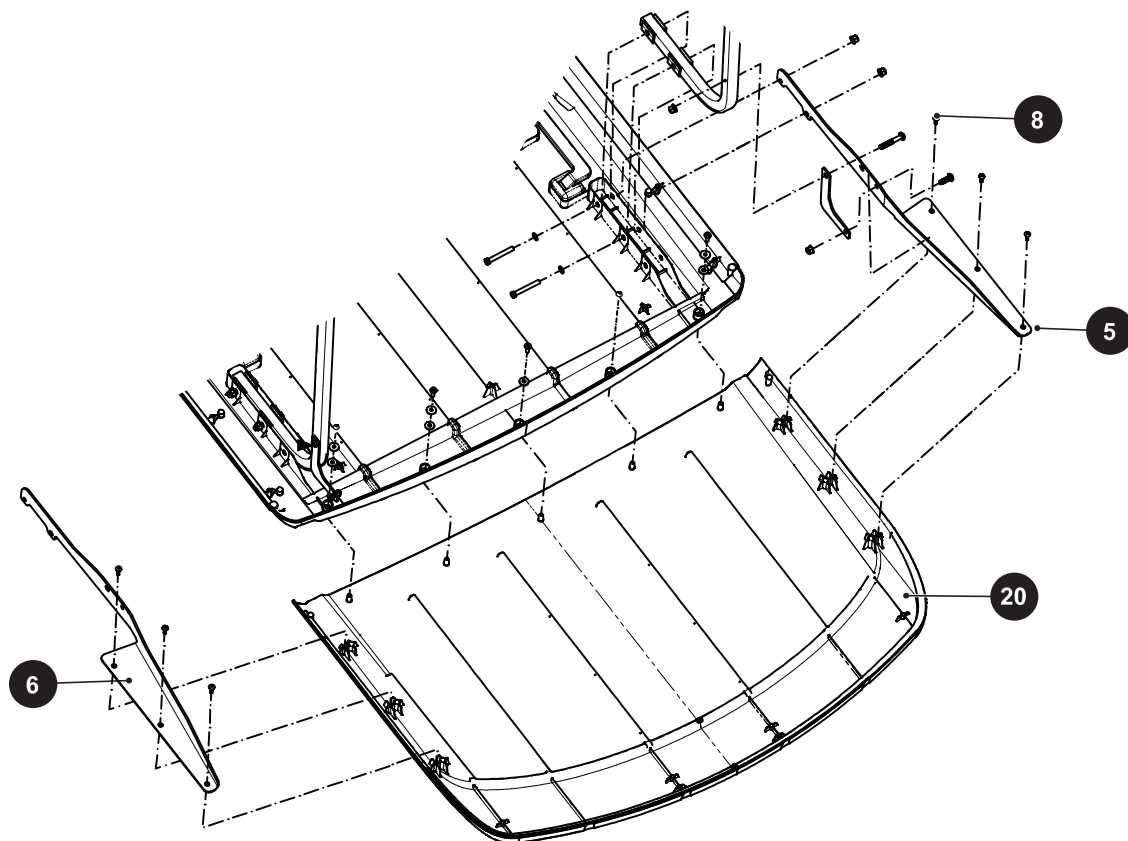
4. Tighten screws to the torque value shown below:

Item	Torque Specification
screw (8)	2 - 3 ft. lbs (3 - 5 Nm)

D. Top Extension Assembly

1. Connect extension brackets (5, 6) to sides of top extension (20) using six 20mm M6 screws (8) as shown.
2. Tighten hardware to the torque value shown below.

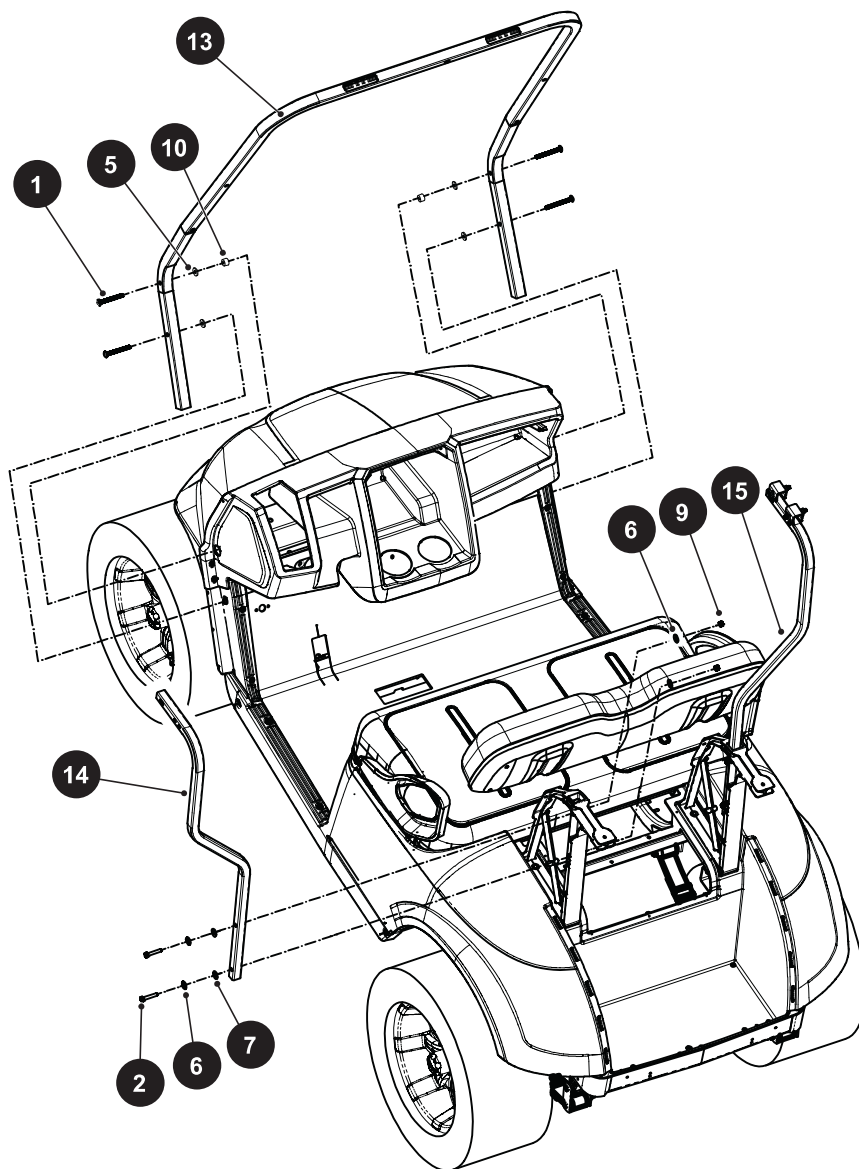
Item	Torque Specification
screw (8)	2 - 3 ft. lbs (3 - 5 Nm)



KIT CONTENTS - 10031581 EXPRESS 2-PASSENGER KIT

ITEM	QTY	PART NUMBER	DESCRIPTION
--	1	10030196	hardware kit, 2 passenger (includes items 1 - 12)
1	4	652311	torx bolt, 5/16 - 18 X 3
2	4	00685G7	cap head screw, 5/16 - 18
3	4	10008552	torx bolt, M8-1.25X60
4	4	10033018	screw, M6
5	8	634808	flat washer, 5/16
6	8	01110G03	flat washer
7	4	17255G1	Teflon washer
8	4	645956	lock nut, M8 X 1.25
9	4	11098G6	lock nut
10	2	634807	spacer, .328 X .75 X. 50
11	2	10033573	canopy bracket assembly (includes items 11A-11B)
11A	2	10009661	front canopy bracket
11B	2	10033567	EPDM tape
12	4	10025583	strut spacer
13	1	10011022	front strut
14	1	10031754	rear strut, (LH)
15	1	10031755	rear strut, (RH)
16	1	10094160G0X	top

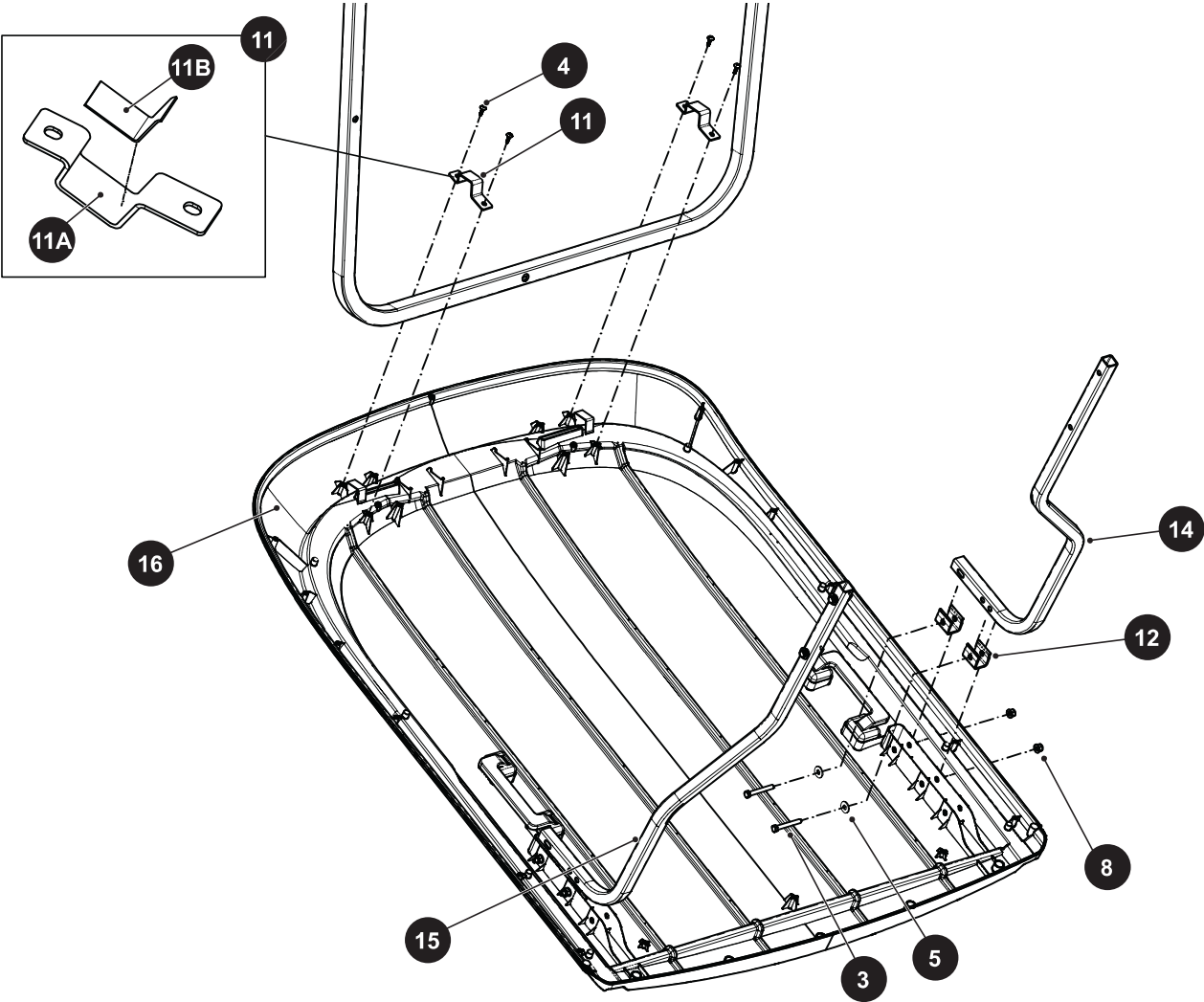
A. Strut Installation



1. Mount front strut (13) to front of vehicle using four 5/16-18X3 torx bolts (1), four 5/16 washers (5) and two spacers (10).
2. Mount rear left and right struts (14, 15) to vehicle using four 5/16-18 hex cap screws (2), eight flat washers (6), four nylon washers (7) and four lock nuts (9). See illustration for correct placement of hardware.
3. Tighten hardware to the torque value shown below.

Item	Torque Specification
torx bolt (1)	13 - 15 ft. lbs (18 - 20 Nm)
lock nut (9)	

B. Top Assembly and Installation



- 1. Align top (16) with mounting holes on front and rear struts.
- 2. Remove backing from tape (11B) and apply tape to the bottom and rear inside faces of front canopy bracket (11A).
- 3. Secure the front end of top to the front strut with brackets (11) and four M6 screws (4) as shown.
- 4. Secure rear of top to rear struts using four strut spacers (12), four 60mm M8 screws (3), four flat washers (5) and four lock nuts (8).
- 5. Tighten hardware to the torque value shown below.

Item	Torque Specification
screw (4)	1 - 2 ft. lbs (1.5 - 2.5 Nm)
lock nut (8)	5 - 7 ft. lbs (7 - 10 Nm)

Reconnect Battery Cables

- 1. Reconnect the negative (-) battery cable to the negative (-) battery post.
- 2. Reconnect the positive (+) battery cable to the positive (+) battery post.
- 3. Tighten hardware to the torque value shown below.

Item	Torque Specification
Battery Hardware	7 - 9 ft. lbs (10 - 12 Nm)