

INSTALLATION INSTRUCTIONS

Brushguard Kit

10015643

READ ALL INSTRUCTIONS BEFORE INSTALLING THIS KIT.

⚠ WARNING

Turn the key switch to the OFF position and remove it from the switch. Install wheel chocks in front and behind each wheel before starting installation procedure.

To prevent battery explosion that could result in severe personal injury or death, keep all smoking materials, open flames, or sparks away from the batteries.



Always wear a safety shield or approved safety goggles when working on the vehicle.

TOOLS

- wheel chocks
- torque wrench (ft. lbs - Nm)
- T30 Torx driver
- Rivnut setting tool
- socket wrench
- 15mm socket

KIT CONTENTS

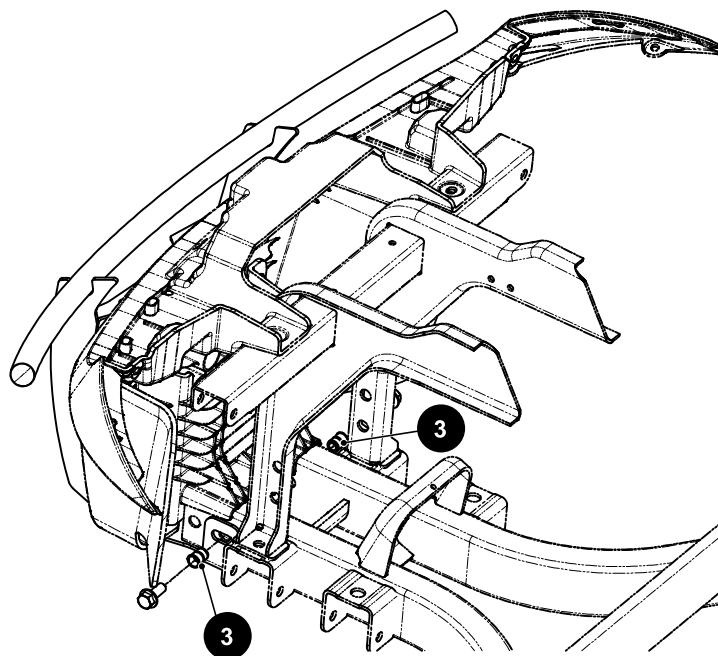
ITEM	QTY	PART NUMBER	DESCRIPTION
1	1	10006397	LIGHTWEIGHT BRUSHGUARD
--	1	10017968	BRUSHGUARD HARDWARE KIT (INCLUDES ITEMS 2 - 5)
2	2	10016998	TUBE CAP, 3/4" ID, 1" OD
3	2	603083	INSERT NUT, M10 - 1.5
4	2	603799	HEX FLANGE BOLT, M10- 1.5 X 25
5	2	10033018	SCREW,T30, M6 X 2.14 X 20

VEHICLE PREPARATION

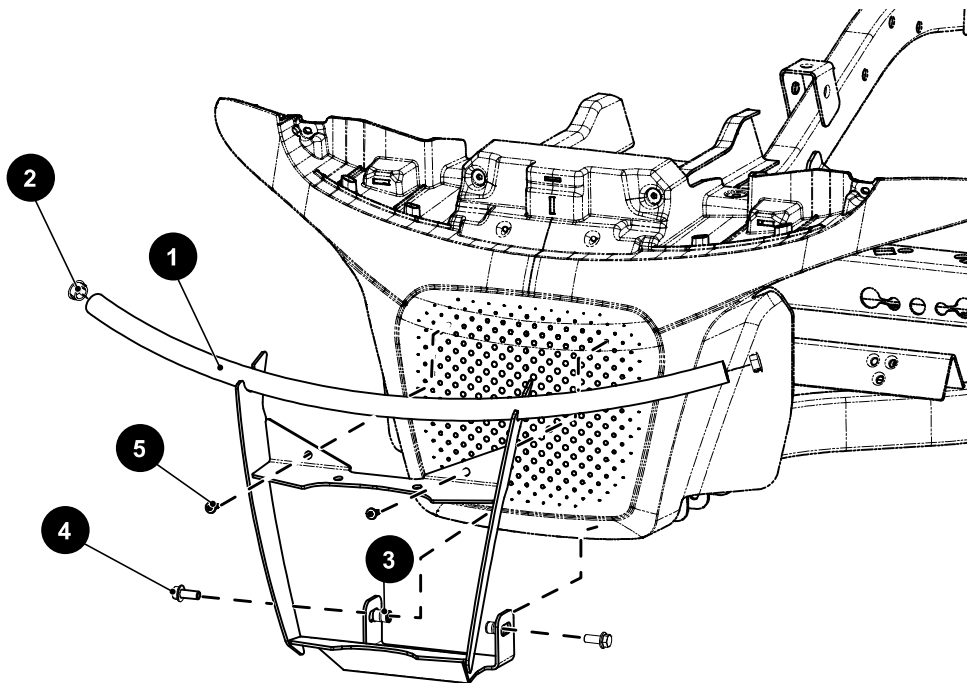
1. Compare the kit contents list to the parts packaged in the kit. Ensure all parts are included before beginning installation.
2. Park vehicle on a flat, level surface.
3. Turn the key to the OFF position and remove the key from the switch.
4. Chock wheels to keep vehicle from rolling.

A. Preparation

1. Use a Rivnut setting tool to install M10 insert nuts (3) into existing holes in the frame in the location shown.



B. Installation



1. Align brushguard (1) mounting bracket with the previously installed insert nuts (3).
2. Attach brushguard to vehicle frame using two hex bolts (4). Alternate tightening until final torque is reached.
3. Attach center bracket of brushguard to cowl using two plastite screws (5).
4. Tighten hardware to the torque value shown below.

Item	Torque Specification
Torx bolt (4)	7 - 11 ft. lbs (10 - 15 Nm)
plastite screw (5)	.73 - 3.7 ft. lbs (1 - 5 Nm)

5. Insert tube caps (2) into ends of brushguard tube as shown.