

# INSTALLATION INSTRUCTIONS

## RXV 2+2 Rear Facing Seat Rear Struts Kit - 54" Canopy

10015208

### READ ALL INSTRUCTIONS BEFORE INSTALLING THIS KIT.

#### WARNING

**Turn the key to the "OFF" position and remove it from the switch. Install wheel chocks in front and behind each wheel before installation procedure. Make sure parking brake is applied.**

**To prevent battery explosion that could result in severe personal injury or death, keep all smoking materials, open flames, or sparks away from the batteries.**



**Use insulated wrenches to decrease the risk of a dropped wrench from shorting out a battery, which could result in an explosion and severe personal injury or death.**



**When you service the vehicle, always wear eye protection. Be careful when working around batteries, or using solvents or compressed air.**

### TOOLS

- wheel chocks
- socket wrench
- 15mm socket
- 15mm wrench
- Torque wrench

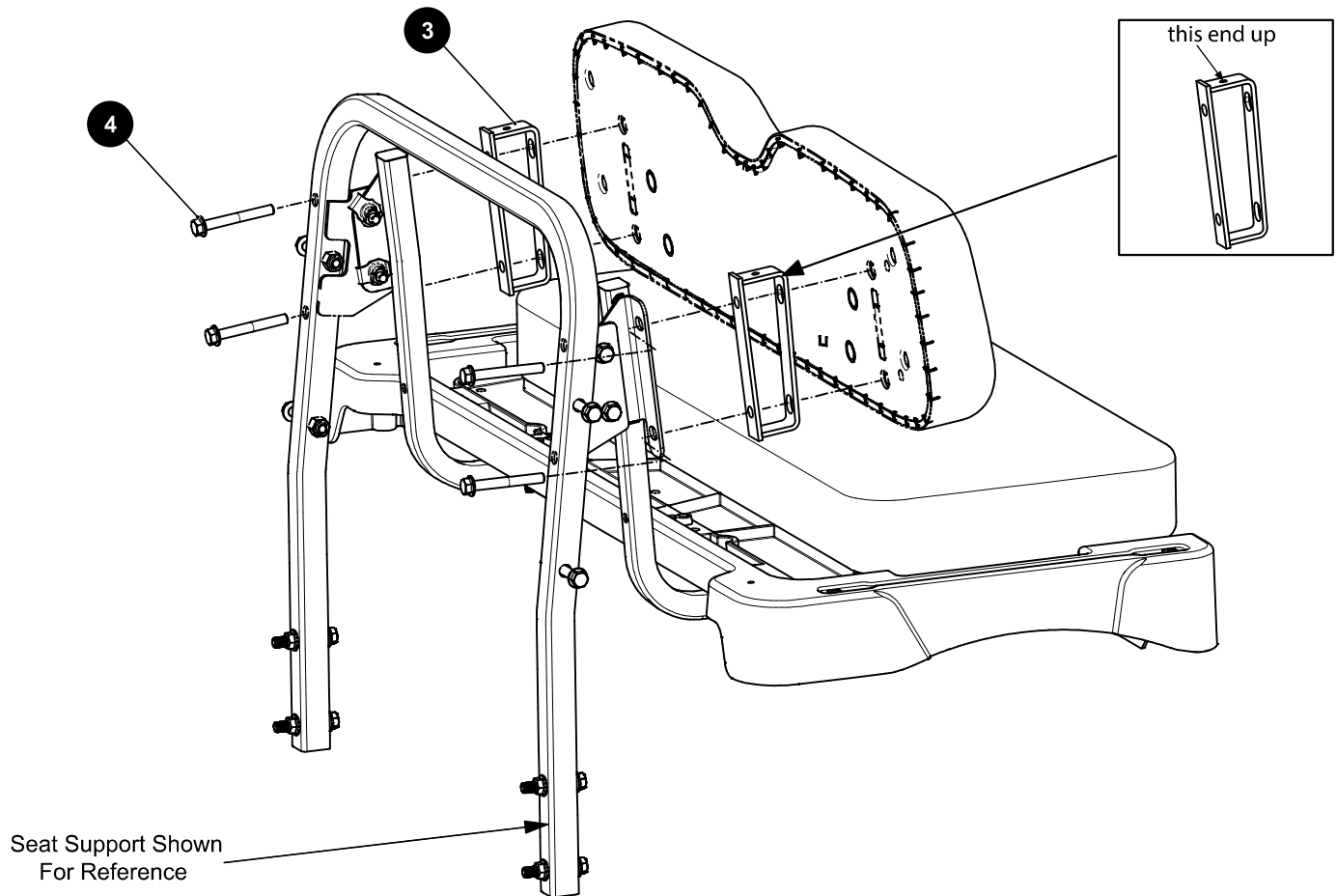
### KIT CONTENTS

ITEM	QTY	PART NUMBER	DESCRIPTION
1	1	10008605G0101	rear strut tube, LH
2	1	10008605G0102	rear strut tube, RH
3	2	10014968	spacer
--	1	10016140	hardware kit (contains items 4 - 6)
4	8	602415	hex flange bolt, M10 - 1.5 X 80
5	4	603800	hex flange bolt, M10 - 1.5 X 50
6	4	600525	locknut, M10 - 1.5

### VEHICLE PREPARATION

1. Compare the kit contents list to the parts packaged in the kit. Ensure all parts are included before beginning installation.
2. Park vehicle on a flat surface.
3. Turn the key to the OFF position and remove the key from the switch.
4. Chock wheels to keep vehicle from rolling.
5. Use a wrench with an insulated handle to disconnect the battery cables. Disconnect the negative (-) cable first, then disconnect the positive (+) cable.

## A. Spacer Installation



**NOTICE:** *Spacer (3) is only needed for RXV standard seat installation. Omit this step for RXV premium seat applications.*

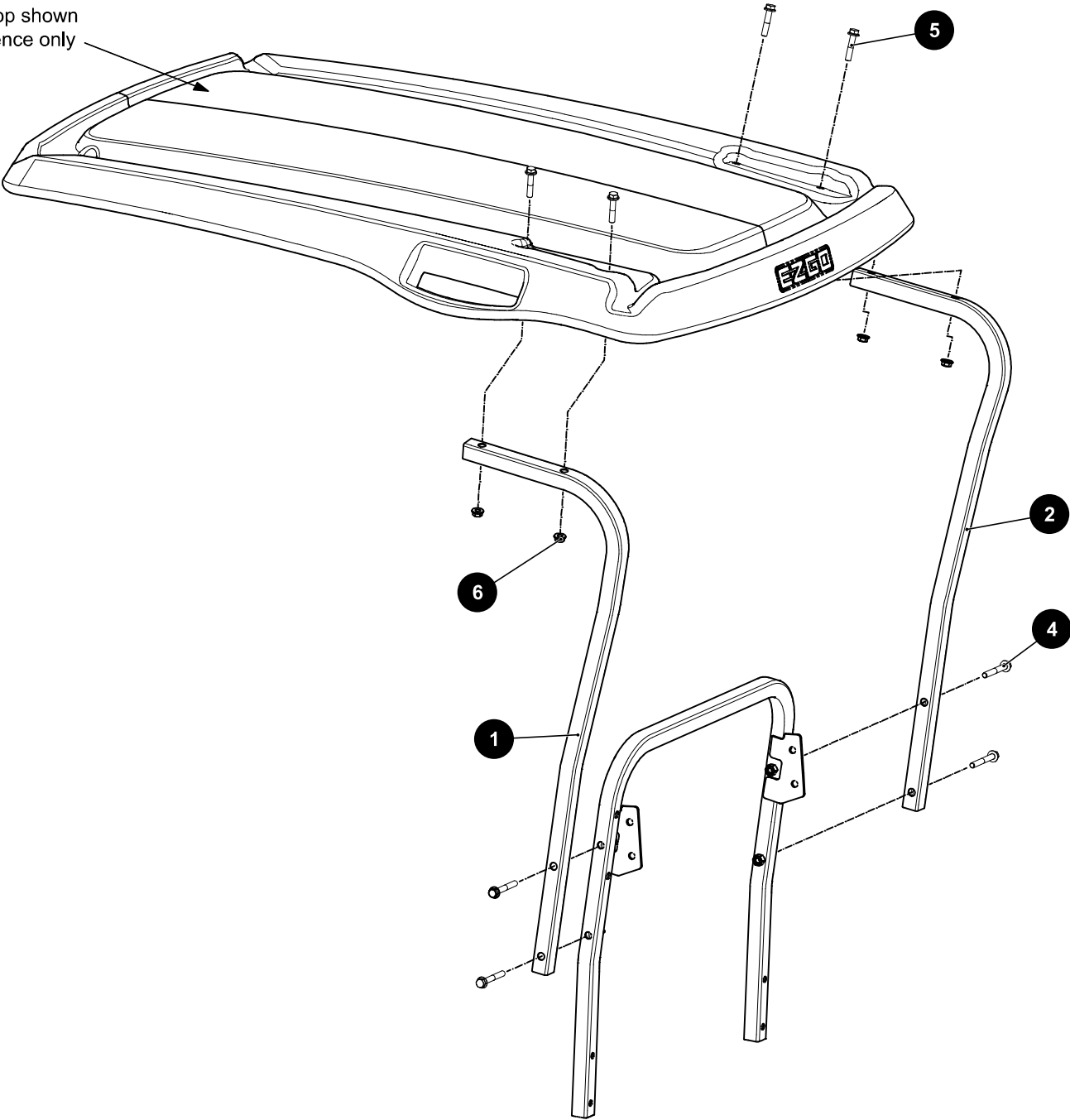
**NOTICE:** *Ensure that hole in spacer is facing upward (see detail).*

1. Remove four existing bolts mounting seatback to seat support.
2. Reinstall seatback with four new M10 bolts (4) and two spacers (3).
3. Tighten hardware to the torque value shown below.

Item	Torque Specification
bolt (4)	13 - 16 ft. lbs (18 - 22 Nm)

**B. Strut Installation**

canopy top shown  
for reference only



1. Attach rear struts (1,2) as shown using two bolts (4) on each side.
2. Connect struts (1,2) to canopy top using four bolts (5) and four locknuts (6).
3. Tighten hardware to the torque value shown below.

Item	Torque Specification
bolt (4)	15 - 16 ft. lbs (20 - 23 Nm)
locknut (6)	6 - 8 ft. lbs (8 - 11 Nm)

### C. Reconnect Battery Cables

1. Reconnect the negative (-) battery cable to the negative (-) battery post.
2. Reconnect the positive (+) battery cable to the positive (+) battery post.
3. Tighten hardware to the torque value shown below.

Item	Torque Specification
Battery Hardware	7 - 9 ft. lbs (10 - 12 Nm)